

Tapestries OF LIFE



Updated January, 2024

TABLE OF CONTENTS

- 02 Introduction
- 03 Work Group Information
- 04 Things to Bring
- 05 Dress Code in Mexico
- 06 Daily Schedule and Menu
- 07 Team Member's Responsibilities
- 08 Team Leader's Responsibilities
- 09 Pastor & Church's Responsibilities
- 10 Dormitory Information
- 11 Vehicle Information
- 12 Mercy Day
- 13 Devotional
- 22 Facts About Mexico
- 23 Shopping In Mexico
- 24 Points To Ponder
- 25 Personal Notes

Welcome to "Casa De Las Gemas", or "The House Of Gems"

INTRODUCTION •

Thank you for choosing Tapestries of Life Ministries, Inc. (TLM) for your Mission outreach. We are so excited that our Lord Jesus has opened your heart to be a vital part of His ministry in Mexico. May the Lord bless you as you begin to embark on a great mission adventure.

TLM provides many ways for people to have "Hands-On" involvement in our missions outreach to Mexico as Mission Groups, Youth Groups, Churches, and Individuals.



TLM was birthed in the hearts of Steven, Cathy, Mark, Amanda, and Danny Brewer, by Our Founder Jesus Christ. Steven is an ordained Pastor with a BS degree in Pastoral Ministries and Mission Aviation.

TLM was incorporated in 1988 in the State of Texas, and also in Mexico in 1993, as an International Orphanage and Adoption Agency; exclusively for Charitable Purposes. It is a Non-Profit 501c(3) Public Organization.

The Vision is to establish a Christian Orphanage that will house homeless children and children from destitute families, until they can adequately care for their own. This sanctuary will administer to the essential health, education, and spiritual needs of the children. The children that are legally adoptable will be placed in qualified Christian Homes.

TLM has 27 acres of land in Guadalupe, Mexico. It is 10 miles from the United States border crossing. We're building for 200+ children. The home is designed in the shape of a cross, two stories high and 55,000 square feet. The land will have a separate Church, Cafeteria, Nursery, Clinic, School, Gym, Work-Shop, Mexican Staff Housing, and Storage Buildings.

” WORK GROUP INFORMATION



A few of the ministry opportunities through TLM are:

- Help build the Orphanage with a Work Group (see below)
- Mercy Ministry & Outreach to the people of Mexico (Pg. 12)
- Donations of building materials, clothing, toys, or money (all gifts are tax-deductible)



Construction of Casa De Las Gemas

By far, this is the most important part of the Ministry! You and your team have an opportunity to be a part of the construction of a home for homeless children. We need laborers of all ages and skills.

Your work group leader should contact us soon because the work calander fills up quickly! Our work group director is the one to contact, so you can coordinate the best work week possible, plus we will let you know what phase of the construction we are in. TLM has basic tools available. If possible, bring your own specialty tools, and don't forget work gear (Pg. 4&5). It is extremely important for you to help raise the funds needed to make your week a successful one! The MINIMUM for each member is \$700.



THIS COST DOES NOT COVER THE COST OF MERCY DAY ON WEDNESDAY (Pg. 12)

The \$700 per person minimum covers

- Cost of basic building materials
- Local travel expenses (Vans, Gas, Insurance, Guard Fees, Etc.)
- Lodging
- All meals for the week (except for Wednesday Lunch, see Pg. 6)
- Kids 12 & under are \$350 when accompanied by a parent

PLEASE NOTE: Funds must be forwarded to TLM at least **TWO MONTHS** prior to your visit in order to purchase & order materials and supplies. Importing materials takes 6 weeks.

There are no refunds once materials have been purchased.

THINGS TO BRING

Preparing For Your Visit



- _ A valid passport
- _ A signed TLM Liability Waiver
- _ Bible & Notebook
- _ Sunglasses and/or protective glasses (blowing sand is frequent)
- _ Sturdy shoes or work boots
- _ Sandals for the shower
- _ Hat, bandana, and/or scarf
- _ Toiletries (soap, toothpaste, antibacterial wipes, etc.)
- _ Sun block (brand new, NOT last years)
- _ Bug spray/insect repellent
- _ Sweatshirt or warm jacket (Night temps are chilly)
- _ Sleeping bag and pillow (if your group is over 60)
- _ Plastic bags for soiled clothes
- _ Camera
- _ Favorite snacks/munchies (in a sealed container)
- _ Camera
- _ Spending \$\$\$ for shopping & eating
- _ Medical kits (aloe, band-aids, peroxide, Tylenol, etc.)
- _ Ear plugs (in case of a snoring neighbor)
- _ Your teddy bear (or your favorite snuggle)
- _ A durable refillable water bottle for your personal use
- _ Flashlight

All of these items are important, trust us!



No Immunization is required, except tetanus booster if needed.
Absolutely NO firearms, Knives (weapons), or Illegal Drugs.
These result in immediate arrest in both countries!

In case of emergency
Tapestries of Life's Office (915) 764-2688
We are on Mountain Time.
tapestriesinfo@tapestriesoflife.com

DRESS CODE IN MEXICO



Keep in the forefront of your checklist:

Customs of dress are probably most often violated by tourists. It's not that we mean to, it's just that we are uninformed. Please follow a few appropriate rules.

On Construction Site

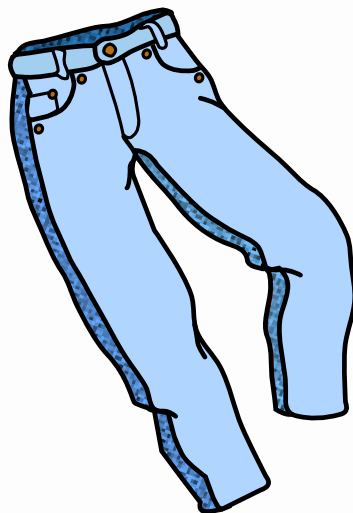
Caballeros (Males)

YES

Tank Tops
Moderate Shorts
Pants/Jeans
Work Boots

NO

Short Shorts



Damas (Females)

YES

T-Shirts
Moderate Shorts
Pants/Jeans
Work Boots
Tank Tops (No Cleavage Showing)

NO

Sports Bras as shirts
Short Shorts

Touring in Mexico

Caballeros

Modest Shirts
Dress Jeans/Pants
Tennis Shoes/Sandals



Damas

Modest Shirts
Dress Jeans/Pants
Modest Skirts/Dresses
Tennis Shoes/Sandals

Shoes must be worn at all times.

Jewelry is not appropriate, such as gold chains, diamond rings, etc. It is not appropriate when working with the poor, plus, you may damage or lose them. LEAVE THEM AT HOME! Dress code is an important part of your witness to the Mexican people for Christ. As such, TLM reserves the right to ask you to change clothes if what you have on is considered by our staff to be offensive to this culture.

DAILY SCHEDULE AND MENU•



Basic Itinerary for a week (subject to change depending on arrival day & lodging)

Saturday

- Arrive at El Paso Airport
- Travel to Fabens (Approx. 45 min)
- Lunch or Supper
- Unpack & Free time

Sunday

- Breakfast
- Church
- Lunch
- Orientation
- Dinner
- Free Time

Monday, Tuesday, Thursday

- 7:30 Leave for Mexico
- 8:00 Breakfast
- 9:00 Devotions
- 10:00 "Manos A Las Orbras" - Time to get to work
- 12:00 Lunch
- 1:00 Work
- 5:00 Dinner
- 7:00 Evening Devotions
- 8:00 Showers & Free time
- 10:00 Lights Out

Wednesday

- Breakfast
- Mercy Day Orientation & Mercy Day
- Dinner

Friday (same as Monday, Tuesday, Thursday except afternoon)

- 1:00 Work
- 4:00 Clean-up everything from the week
- 5:00 Dinner and Goodbyes
- 7:00 Pack and preparing for departure

Saturday

- Breakfast & Off to airport



TEAM MEMBER RESPONSIBILITIES

- Fill out all required forms and return them to Team Leader ASAP!
- Prepare your body & spirit
- Complete the TLM devotional as scheduled (Pg. 13-21)
- Be willing to attend any meetings concerning missions to Mexico
- Be in an attitude of prayer about your part in God's plan.
- Bring a notebook/journal to record your daily experiences.
- Be prepared to share your experiences upon returning home.
- Respect is to be shown to the Mexican nationals and officials you come in contact with. The utmost respect is also to be shown at the border crossing to and from Mexico. You are guests in their country and ambassadors of Jesus Christ.
- Upon returning to the United States you must declare your citizenship, so be prepared to prove it if necessary.
- Your behavior is an important part of your witness. Non-Christian behavior will mean a ticket home at your own expense.
- Help with fundraising for your group. The need is greater than the amount your group will be spending.
- If you leave behind any items either in Mexico or at the Outpost in Texas, we will **not** be able to mail them back to you. Many groups visit us in a month and we cannot keep up with forgotten belongings. What you leave behind will be considered a donation to the ministry.



TEAM LEADER'S RESPONSIBILITIES



Classrooms



**Kids are
Welcome!**

- Contact TLM to coordinate your desired work dates with our work calendar. The calendar fills up fast, so prompt payment of the groups deposit is essential to ensure the dates you request. A deposit of \$300 is required (non-refundable).
- Once you are scheduled to come, please avoid date changes. Notify TLM of your lodging preferences. Reservations are first come first serve.
- Leaders are responsible for handling money for their group and for mailing the funds to the TLM office **two months** before the teams arrival date. Your Mercy Day is all up to your group. Funds are to be raised over and above your \$700. If you have further questions, please call. (Pg. 12)
- Assist in organizing the work project: Inquire who has what skills. You MUST be part of the work team that is coming for that week!
- Obtain all necessary forms from your group. Make sure liability waivers have been signed and bring them with you. Fill out and return team information, including participants lists. These forms need to be mailed or faxed 30 to 60 days before your arrival.
- Leave distractions at home. This week is to be quiet before the Lord. Only leaders can bring special music for your group.
- Discuss small children's involvement. Parents will be responsible for their children; they shouldn't use teens to babysit!
- Follow the same guidelines as set for team members. Prepare your group for culture shock. This is a third-world country. Each team member, no matter how young, old, strong, or weak has a deep desire to be a servant to our Lord. Each one has sacrificed to be here. You need to show forth compassion and joy when things don't run as planned. Set realistic expectations.

PASTOR & CHURCH'S RESPONSIBILITIES

The body of believers should be wholeheartedly committed to Missions abroad as well as at home. We invite the Pastor or Missions Director to come out and spend time with us. This will strengthen his/her commitment to preparing your team to come here.

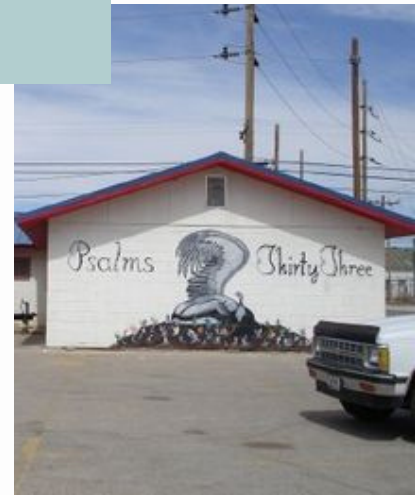
- Support the work team prayerfully
- Support the work team financially
- Keep the event in the forefront (Pulpit, bulletins, announcements)
- Sponsor members who cannot afford to go, but show a genuine interest in Missions.
- Hold classes on missions
 - Pastor and others should share their past missions experiences
 - Have Pastor Steve Brewer from TLM come and share God's vision of the work in Mexico.
 - Talk about culture shock (What is it?)
 - Diligently pray for the group during the trip
- Give ample time for church staff who need to take days off work. *A mission trip is NOT considered a vacation.*
- Assist in raising the funds for any additional project your group will want to accomplish.
- Give your group and opportunity to share from their hearts about their missions experience. The first Sunday after their return trip is the best time, while the experience is still fresh in their minds.



DORMITORY INFORMATION •

The Outpost

The Outpost is located in the town of Fabens, on Main St. (10 minutes from the border). The dorm costs are included in the program. It can house 50+ people and has a full kitchen, full bathrooms, and hot showers. The bunk beds have inner-spring mattresses. The MENS bunks are college size (Twin XL). We have enough sheets, pillows, and blankets on-site for teams under 60 people. The Outpost also has a very large activity room as well as a laundry facility. Please don't leave us your dirty laundry when your week is over.



VEHICLE INFORMATION



When bringing your **Personal** vehicles to drive into Mexico, it will be necessary to purchase border insurance and coverage while in Mexico (unless you are from AZ, NM, TX, or CA). It is advised that this be taken care of in advance. Here are two recommended Insurance Companies.

Farmers Insurance Group (915) 593-4000
Insurance Consultants International (915) 591-8279



TLM has 3-4 15 passenger vans with optional rental vans as needed for larger groups.

Only licensed drivers are permitted to operate TLM vehicles. If your group is involved in an accident with TLM's vans, your group will be held responsible for the \$500 deductible. Damage due to obvious abuse will be the full responsibility of the group. Your group is also responsible for any damage done to rental vans.

All vans must be cleaned prior to your team's departure.

It is not necessary to apply for a VISA for your car or truck unless you travel 25 miles past the U.S. border. Groups are subject to brief and perfunctory baggage inspections by Mexican Customs Officials.



When Driving there is no need to be nervous! At the border:

Remove Sunglasses & Hats

Be respectful and polite

Be prepared to show proof of identity

Do not take any photos at the port of entry

No guns, knives, or illegal drugs allowed.

MERCY DAY

We minister to anywhere from 250 to 1000 children and adults each Wednesday, with visiting groups assisting us. Many groups desire to bring items to express their love for the Hispanic people. Your group needs to keep these numbers in mind as you prepare.

Matthew 5:7 "Blessed are the Merciful, for they shall obtain Mercy.

If your group cannot bring enough for at least 250 families and 500+ children at a time, the TLM staff will store your donations, then hand out items when we have the proper amount to distribute. We always want to have enough for everyone. No used items.

The ideal situation is to bring EXTRA funding. We can purchase food items directly in Juarez, MX. From our experience, we can purchase for 300 families eggs, butter, meat, tomatoes, onions, chilies, bananas, carrots, and tortillas for approximately \$4,000-\$5,000. Ultimately, this day can ONLY happen if your group makes it happen. If your group would like to give Spanish Bibles, you need to raise additional funds and purchase them prior to your visit. We recommend La Biblical Illustrate; Version 1990/David C. Cook Publishing Co. Elgin, IL 60120



Examples of what to bring. If you have other ideas, please contact TLM before purchasing.

Food Items

dried rice/ dried pinto beans/ macaroni/ canned corn/ canned green beans/ canned tomato sauce/ sugar/ flour/ corn meal/ candy/ canned meats

Non-Food Items

band-aids/ peroxide/ rubbing alcohol/ toothbrushes & paste/ school supplies/ shampoos & conditioners/ sewing kits

Other Items

NEW toys/ diapers & wipes/ vitamins for all ages/ blankets/ clothes line & clothes pins/ umbrellas (to protect against UV rays)/ clothing/ shoes/ socks/ underclothes

NO USED ITEMS AT ALL!

A Personal Devotion Plan



"He is no fool who gives up
what he cannot keep to gain
what he cannot lose."
-Jim Elliot

WALKING ON WATER

Matthew 14:25-33

(25) Shortly before dawn Jesus went out to them, walking on the lake. (26) When the disciples saw him walking on the lake, they were terrified. "It's a ghost," they said, and cried out in fear. (27) But Jesus immediately said to them: "Take courage! It is I. Don't be afraid." (28) "Lord, if it's you," Peter replied, "tell me to come to you on the water." (29) "Come," he said. Then Peter got down out of the boat, walked on the water and came toward Jesus. (30) But when he saw the wind, he was afraid and, beginning to sink, cried out, "Lord, save me!" (31) Immediately Jesus reached out his hand and caught him. "You of little faith," he said, "why did you doubt?" (32) And when they climbed into the boat, the wind died down. (33) Then those who were in the boat worshiped him, saying , "Truly you are the Son of God."



This devotional plan is designed to prepare you for your mission week spiritually, physically, and mentally. When you prepare yourself in every area, you will have an experience that you will never forget! The following recommendations will be very helpful to you. Start today!

Physical Preparation

Always remember to stretch before & after exercising.

One half-hour of continuous cardiovascular exercise.
25 or more sit-ups daily.
Light Weight Lifting.

Mental & Physical Preparation

Read your work group member workbook more than once!
Follow its suggestions and checklists.
Visit the library and read about Mexico.



Study this daily devotion the week before your trip to Mexico. As you read the scriptures each day, write down your thoughts.

If you allow God to have His way, He'll change your life dramatically! In the end, what you gain from your encounter with God will be determined by you. You are the one who decides if you will come prepared or not.

That means you are faced with a decision! If you don't want the best of what God has for you, then throw this workbook away. Come down and visit Mexico as if it were any other work camp. However, if you wish to have all of what God wants to give you, and come fully prepared for missions to Mexico, then dig in! We think you'll enjoy what He has in store for you.

We look forward to serving the Lord with you and having a great time together! God bless you! Are you ready to begin your journey?

DAY 1

Are there areas in your life that seem as impossible as walking on water? Are there things in your life God is asking you to face that seem too big? If there are, then God has your number. He'll let you know how to face them, because He, too, shared in your humanity (Hebrews 4:14). He understands how you feel when faced with overwhelming circumstances. The difference is, He knows how to walk you through them and overcome any situation that you think is impossible. The Lord can also take a situation that you thought was impossible and strengthen your faith and help you walk through it.

Shortly before dawn
Jesus went out to them,
walking on the lake.
Matthew 14:25

Whenever you are confronted with a circumstance you feel is overwhelming, the Lord will show you the way to accomplish it with Him. He will either set the example for how He wants you to do it, illuminate your way through His Word, or show you bit by bit as you walk out the unknown by faith.

The Lord may call you to do the unknown, but He is still God in that unknown circumstance because what is unknown to you is known to Him. He knew what it was to walk on water, even before Peter ventured out. He has a plan or solution or everything He calls you to do.

What impossible circumstances are you facing?

Pray and ask God to show you a verse or passage that deals with the situation with which you are confronted. Ex. If you need direction- Proverbs 3:5-6 might be a good verse to hold onto.

I challenge you to memorize the verse(s) He gives you and put them in your heart. Soon you will begin to see your situation from a new perspective. You will see that your circumstances are not impossible with the Lord's help.

DAY 2

Walking on the water is out of the ordinary if you ask me. It seems like a pretty impossible feat to accomplish in the natural. That is how the disciples looked at it- in the natural- and that is what caused them to be afraid. They reacted to this unknown situation in fear.

Many times, that is your first reaction when you are face with impossible circumstances. God is calling you to be a man or woman of faith and not to respond in fear to tough situations but instead to respond in faith. Even when others are being fearful around you, don't let them cause your faith to sway. God was showing His disciples that something they thought was impossible, really quite possible. He wanted their eyes to be opened to see things from a different perspective - a perspective that all things are possible with Him.

When the disciples saw him walking on the lake, they were terrified. "It's a ghost," they said and cried out in fear.
Matthew 14:26

Is fear holding you back in an area?

How can you overcome this fear?

What is your perspective of your circumstances?

Is it the same as God's perspective?

DAY 3

When Jesus saw His disciples walking in fear, He rebuked them. He also encouraged them to step it up and walk in faith. Peter must have been full of courage because he asked to walk on water. He knew it would be possible with the Lord at his side. Out of everyone on the boat, Peter was the only one willing to step out and do the impossible. He didn't let the fact that no other disciples would do it influence or sway him.

Many times you are the only one that will take a step of faith in obedience to your father, but you won't regret it! Don't let the doubt of others or their lack of obedience hold you back. Rise up! Do what God has called you to do, no matter what others are or aren't doing around you. Don't let others dictate how you respond to the Father beckoning you to step out in faith.

But Jesus immediately said to them: "Take courage! It is I. Don't be afraid." "Lord if it's you," Peter replied, "tell me to come to you on the water."
Matthew 14:27-28

Who or what is calling you back?

Whose voice are you listening to?

How can you change or become free to serve?

DAY 4

I can just imagine all of the thoughts racing through Peter's head as he was climbing out of the boat. He was probably asking himself why he was doing such a crazy thing. Even though fears must have been racing through his head he didn't let his thoughts stop him. As Peter was swinging his leg over the side of the boat, he was responding to the Lord telling him to come. By Peter getting out of the boat, he was leaving his place of safety. It was also his comfort zone. He was willing to leave all he knew to step out in faith into the unknown. When Peter asked the Lord to walk on water, the Lord gave him a one-word response- "Come." The Lord didn't give Peter lengthy or detailed instructions about what would happen after he "came." Peter didn't have a clue what to expect and he really didn't have much to go on, except the word, "come." Peter chose to trust anyway and step out of the boat. He knew that no matter what happened the Lord would be right there with him.

"Come," he said. Then Peter got down out of the boat...
Matthew 14:29a

When God calls you to get out of your comfort zone, be bold and step out. Don't let fear of the unknown keep you from doing what God has called you to do. Even if God doesn't give you all the details, trust Him and "come." Be willing and obedient.

In what areas has the Lord told you to "come"?

Have you been obedient and trusted?

What is your trust level?

DAY 5

Peter was walking on water. He's doing the impossible. It says, "he came toward Jesus." When you go toward an object or person, that's where you're looking- it's where your focus is. At that point, Peter's entire focus is. At that point, Peter's entire focus was on the Lord. He only began to sink when he shifted his focus from the Lord to the wind and what was going on around him.

The wind can represent people and circumstances in your lives. When you are focused on the Lord, you can do the impossible. It's when you begin looking at your circumstances and letting them rule you, that you start to sink in the impossible. Proverbs 4:25 says, "Let your eyes look straight ahead, fix your gaze directly before you." Then in verse 27a it says, "Do not swerve to the right or the left." Stay focused on the One who has called you, no matter what is going on around you. Don't even glance to the right or the left. It's not worth it to take our eyes off of Him. As long as your focus is on the Lord, you will be able to carry out all He has called you to do.

he walked on the water and came toward Jesus. But when he saw the wind, he was afraid and, beginning to sink, cried out...

Matthew 14:29b-30a

Where is your focus right now?

Is there anything that is causing you to "sink"?

DAY 6

When Peter began to sink, he had three choices. He could: 1) just give up and drown; 2) try to swim back to the boat by himself or; 3) call out to the only one who could truly save him. When Peter called out to the Lord, it says in verse 31, that the Lord immediately reached out to save Peter.

When you're struggling to fulfill the impossible in your life don't quit. Don't try to do it by yourself. Just call out to Him, and He'll come to your rescue. He's not going to let you down or call you a failure. He's a God of mercy and wants to see you complete what He has called you to do.

Zechariah 4:6b- 'Not by might nor by power, but by my Spirit,' says the Lord Almighty.

"Lord, save me!"
Immediately Jesus reached out his hand and caught him. "You of little faith," he said, "why did you doubt?"
Matthew 14:30b-31

Are you trying to overcome areas in your life by your own might and power?

Are there areas in your life you need to relinquish control to him?

Prayer: Father, allow me to know your heart, to feel what you feel toward those who are truly in need. Show me what my part is in expressing your love for the treasures of Mexico.

DAY 7

The disciples saw Peter walk through all of this. They saw him step out, walk, and even sink, but they also saw the Lord rescue and take care of Peter. But Peter being obedient and doing what those around him thought was impossible, it brought glory to God. It says they began to worship God. It made them realize it truly was God who had walked to them on the water in the first place. He wasn't a "ghost," like they thought in verse 26. He proved to them He was real and not fake.

Through your circumstances, let God show Himself to be real and living, not just in you, but also to those around you.

And when they climbed into the boat, the wind died down. Then those who were in the boat worshiped him, saying, "Truly you are the Son of God."

Matthew 14:32-33

Are you trying to overcome areas in your life by your own might and power?

Are there areas in your life you need to relinquish control to him?

When contemplating if the walk of faith in front of you is worth it, remember this...

"If not you, then who? If not now, then when?"

There are people out there who are waiting to meet God in you. But they will never know Him unless you step out and obey.

GETTING TO KNOW MEXICO



It would take us a year to teach you all about Mexico and its diverse culture. We would suggest that you (or as a group), visit your local library and learn about Mexico and the area you'll be ministering in and visiting.

Mexico geographically can be compared to the United States. Mexico is a Country. Within her borders are states, then cities, and small colonias (towns). Some states in the U.S. have different weather patterns, plant life, foods, industry, economics, and even strange dialects. Mexico also shares the same diverse cultures within its borders.

TLM's work is in the state of Chihuahua; the Colonia Guadalupe. It's a desert region that only accumulates 1 to 10 inches of rain a year. The terrain is sandy and dry. We are approximately 4,000 feet above sea level. The temperatures in:

- Nov-Feb are 70-85 degree days and 15-25 degree evenings
- Mar-May are 85-95 degree days and 40-60 degree evenings
- Jun-Oct are 95-115 degree days and 60-70 degree evenings



The WINDY season is from March-May & September-November with wind gusts of 26-60 mph. Believe it or not, we get some snow! Occasional flurries in December.

Our ecosystem consists of mountain lions, jackrabbits, rattlesnakes, tarantulas, and scorpions, just to name a few. Some are venomous and some harmless. The plant life consists of cactus-type plants, palm trees, and, yes, we have tumbleweeds.

The major food staples are corn, rice, beans, tortillas, and a wide variety of veggies and fruits. Most importantly the chilies that make up our hot mild salsas! Yummy!

SHOPPING IN MEXICO

Wednesday morning we will have a separate orientation for our trip to Soriana and Mercy Day.

S-Mart is the supermarket we travel to in Juarez where we pick up our food order for Mercy Day. While waiting for S-Mart employees to get our order ready, team members have an opportunity to purchase their own lunch at the deli. Take some time to walk through the store and purchase other items you may want excluding items that can not be imported into the United States. (Example: Fruits, Veggies, and raw Meat)



One Orange can cost you a \$1,000 fine!!!

No need to exchange your U.S. Currency. It's wise to have small bills for shopping. NO bills larger than \$20.

- DO hide your valuables in your vehicle
- DO lock your vehicle
- DO carry your money/wallet in front pockets
- DO pay for whatever you break
- DO know there are no refunds or exchanges
- DO shop in pairs or groups and stay in the designated area
- DO bring your own bottled water
- DO drink canned or bottled soda pop
- DO follow all government customs regulations
- DO be polite and most of all DO HAVE FUN!!!

**General
Safety Tips**

POINTS TO PONDER.

Your missionaries need you to trust them. They know the country in which they are working and they will be looking out for your best interest. Your missionaries have carried the vision of the Lord for many years. Many prayers, preparations, hard work, sacrifice, and unseen tears have gotten them to where they are today. However, sometimes we have to learn hard lessons just as they had to, but it will greatly strengthen your walk with the Lord.

Your missionaries are servants of our Lord and they want you to be a servant. So be open. Be willing to serve in the least or greatest areas of servanthood. Your missionaries ask you in all meekness; please do not complain. Missions is never easy. Rewarding, yes, but a life that needs to be flexible. Each person will experience culture shock in different ways. We'll talk more when you come, but you should be prepared to listen, observe, and pray as you learn about a Third World Culture.



Your missionaries want you to be prepared spiritually, physically, and mentally: so please take their recommendations in this booklet to heart.

CONTACT US

www.tapestriesoflifeministries.org

Follow us on

Facebook- *Tapestries of Life Ministries*

Instagram- *tapestriesoflifecasadelasgemas*

Email

contact.tapestries@gmail.com

tapestriesoflifeministries@gmail.com

stevencasadelasgemas@hotmail.com

Mailing Address

PO Box B

(791 Fabens Island Road)

Fabens, TX, 79838

Pastor Steve Brewer (915) 234-837

Work Group Coordinator (989) 390-4596

Clothes Closet (989) 390-4596